



Azure Blue Favorites

Copyright 2016, HelpEssentials. All rights reserved.

No part of this document may be reproduced, transmitted in any form or by any means without the prior written permission of HelpEssentials.

www.helpessentials.com

Table of Contents

Azure Blue Layout with Favorites.....3

Supported RoboHelp versions	3
Supported Browsers	3
Where are the Favorites Stored?	3
European Union cookie law compliance.....	3

Using the Layout4

Importing the Layout	4
Customising the Layout	5
Localisation.....	5

Azure Blue Layout with Favorites

Thank you for purchasing the Azure Blue Layout with favorites. With this screen layout you allow readers to save topics as favorites. If you encounter any problems using these widgets, don't hesitate to [contact us](#).

Supported RoboHelp versions

The Azure Blue Layout with Favorites supports RoboHelp 2015

Supported Browsers

This widget supports all browsers that support the Azure Blue layout.

Where are the Favorites Stored?

The favorites are stored in the browser of the end user. The script uses HTML5 local storage or, if that is unavailable, cookies. A benefit of this method is that every user has his own favorites. Even when multiple users use the same computer.

Because the favorites are stored in the browser of the end user, you can safely publish a new output while the end user retains their favorites. Only when the end user clears all cookies and local data from their browser, will they lose their favorites.

The only other scenario in which a user loses the stored favorites, is when you place the help on another location. For instance, your help is saved on:

`http://www.example.com/favorites/index.htm`

All the favorites are saved for the help being on this location. Later you place the help on the location:

`http://www.example.com/myhelp/index.htm`

All the favorites will only apply to the old location and not to the new location.

European Union cookie law compliance

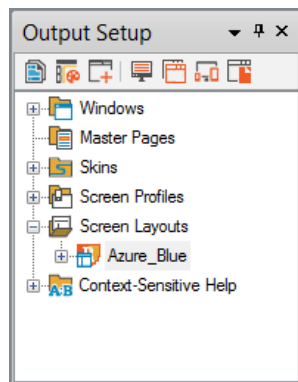
If you use this script for end users in the European Union, you may need to inform the user that your help uses cookies. See <http://www.ffw.com/pdf/cookie-consent-tracking-table.pdf> for more information.

Using the Layout

Importing the Layout

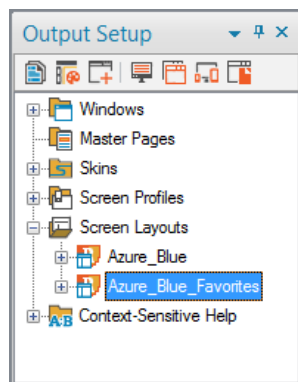
To start using the layout, simply import the layout into any RoboHelp 11 or later project:

1. Choose **Project > Pods > Output setup**



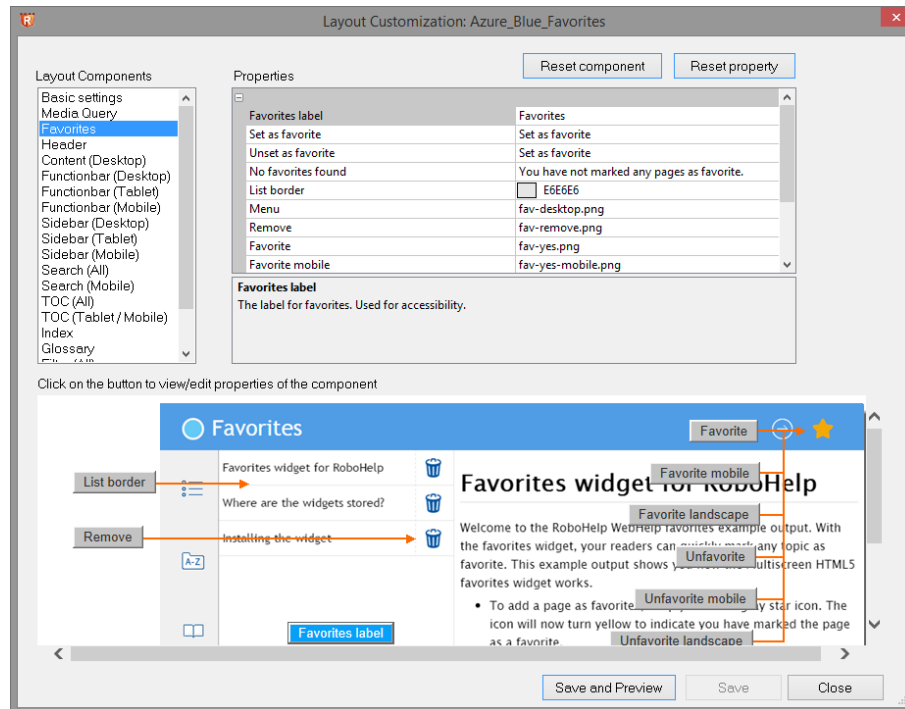
2. Right click **Screen Layouts** and choose **Import**
3. With the file picker, select the layout file and click **Open**

The layouts is imported and ready for use.



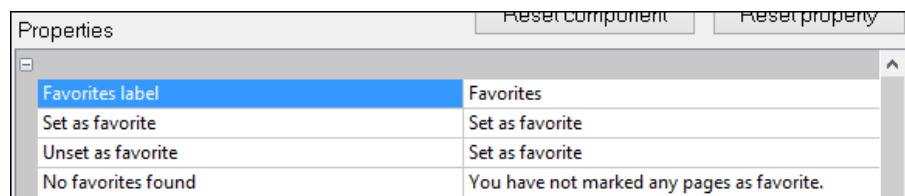
Customising the Layout

The Azure Blue Favorites support the RoboHelp editor like the regular Azure Blue layout. The layout has extra options for the favorites:



Localisation

The widgets have several language settings. You change the settings through the layout editor. Change the text in the right pane to update the text used.



Note: Avoid using quotes in the text. When you use quotes for any of the four texts, the favorites will no longer work.